



CORRECTIVE SERVICES

AUSTRALIA

 EMBARGO: 11:30AM (CANBERRA TIME) WED 30 JUNE 1999

CONTENTS

	<i>page</i>
Notes	2
Summary of findings	3

TABLES

1 Persons in prison custody	6
2 Persons in prison custody, by sex and type of prison custody	8
3 Persons in prison custody, by legal status and sentence type	14
4 Sentenced receptions into prison custody, by type of sentence ..	18
5 Indigenous persons in prison custody, by sex	20
6 Indigenous persons in prison custody, by legal status and sentence type	23
7 Persons in periodic detention, by sex	27
8 Federal sentenced persons in prison custody, by sex	29

ADDITIONAL INFORMATION

Explanatory notes	30
Glossary	34

- For more information about other ABS statistics and services please refer to the back cover of this publication.
- For further information about these statistics contact Ian Appleby in Melbourne on 03 9615 7085.

NOTES

FORTHCOMING ISSUES

<i>ISSUE</i>	<i>RELEASE DATE</i>
June 1999	30 September 1999
September 1999	30 December 1999

ABOUT THIS PUBLICATION

This publication presents monthly information on persons in custody, and the statistics are derived from information collected by the Australian Bureau of Statistics from administrative records held by corrective services agencies in each State and Territory. Details are provided for each State and Territory, together with numbers and imprisonment rates by type of custody (i.e. open or secure custody or periodic detention). Information is also presented on prisoner numbers by legal status (sentenced or unsentenced) and by sentence type, for all prisoners and for Indigenous prisoners, together with the number of sentenced receptions into custody and the number of federal prisoners.

The valuable contribution of the Board of Management and the Advisory Group of the National Corrective Services Statistics Unit (NCSSU) to the production of the statistics in this publication is acknowledged.

SYMBOLS AND OTHER USAGES

ABS	Australian Bureau of Statistics
ERP	Estimated Resident Population
n.a.	not available
n.p.	not published
r	figures or series revised since previous issue
..	not applicable
—	nil or rounded to zero

Where figures have been rounded discrepancies may occur between the sum of component items and the total.

W. McLennan
Australian Statistician

SUMMARY OF FINDINGS

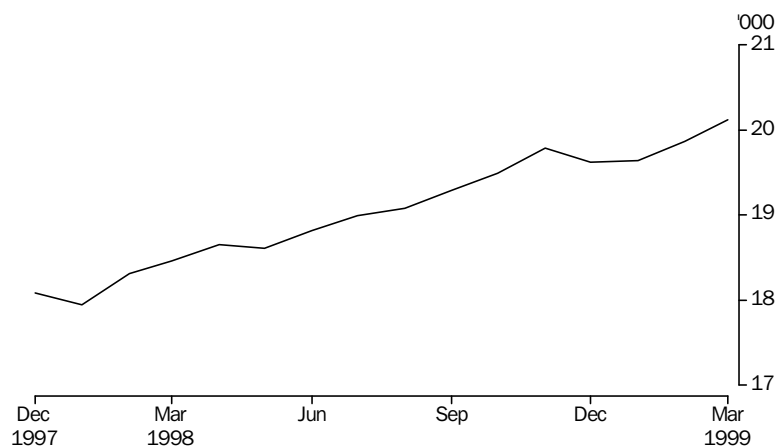
NUMBER OF PRISONERS

In the March quarter 1999 the average daily number of prisoners in Australia was 19,878, an increase of 247 (1%) on the December quarter 1998. Western Australia and the Northern Territory made the greatest contributions to this increase, rising by 180 (7%) and 27 (4%) respectively. There were decreases in prisoner numbers in Victoria (30 or 1%), Tasmania (14 or 4%) and South Australia (7 or 1%).

Of all prisoners in the March quarter 1999, 6,834 (34%) were in New South Wales. Queensland accounted for another 5,101 (26%) prisoners, followed by Victoria and Western Australia with 2,827 (14%) and 2,765 (14%) prisoners respectively.

The average daily number of prisoners in Australia increased by 1,643 (9%) over the year from the March quarter 1998. The most significant increases were recorded in New South Wales and Western Australia, rising by 554 (9%) and 526 (24%) respectively. The average daily number of prisoners increased over this period in all other States and Territories except South Australia which decreased by 58 (4%).

PERSONS IN PRISON CUSTODY—Australia



RATES PER 100,000 ADULTS

Nationally, the average daily imprisonment rate was 140 prisoners per 100,000 adult population during the March quarter 1999 compared to 139 in the December quarter 1998, and 130 in the March quarter 1998. The Northern Territory had the highest rate of 468 prisoners per 100,000 adult population, substantially greater than the next highest, Western Australia and Queensland with rates of 203 and 195 prisoners per 100,000 adult population respectively.

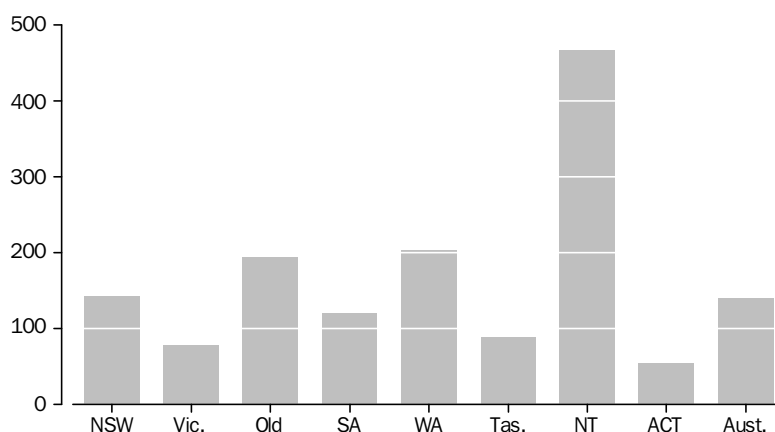
SUMMARY OF FINDINGS *continued*

RATES PER 100,000 ADULTS *continued*

Between the December quarter 1998 and the March quarter 1999, the national imprisonment rate increased by 1%. The greatest increases were in Western Australia (6%) and Northern Territory (4%). The rates for Australian Capital Territory and Tasmania decreased by 12% and 4% respectively over the same period.

AVERAGE DAILY IMPRISONMENT RATE

(a)



(a) Rate per 100,000 adult population.

SEX

Of the average daily number of prisoners in Australia during the March quarter 1999, 18,691 (94%) were males and 1,187 (6%) were females. The proportion of prisoners who were female ranged from 8% in Western Australia to 4% in Tasmania.

TYPE OF CUSTODY

There was an average daily number of 14,275 prisoners (72%) in secure prison custody in Australia during the March quarter 1999, with the remaining 5,603 prisoners (28%) held in open prison custody. The highest proportion of prisoners held in secure prisons was recorded in Victoria (89%), followed by South Australia (86%). The State or Territory with the lowest proportion of prisoners in secure prison custody was the Australian Capital Territory (including Australian Capital Territory prisoners held in New South Wales prisons), with 45%. All female prisoners in South Australia, Tasmania and the Northern Territory were held in secure prison custody.

LEGAL STATUS AND SENTENCE TYPE

Legal status and sentence type information is reported on a 'first day of the month' basis (see Explanatory Notes, paragraphs 4 and 5). On 1 March 1999, there were 19,999 prisoners in Australia. Of these, 16,774 (84%) were sentenced and 3,225 (16%) were unsentenced. The Australian Capital Territory, including Australian Capital Territory prisoners held in New South Wales prisons, had the highest proportion of unsentenced persons in prison custody (26%), followed by South Australia (20%) and New South Wales (18%). Queensland recorded the lowest proportion of unsentenced persons in prison custody (12%).

SUMMARY OF FINDINGS *continued*

SENTENCED RECEPTIONS

There were 9,316 sentenced receptions in Australia during the March quarter 1999. Of these, 2,152 (23%) were of persons received into custody for default of fines and no other sentence (fine default only), with Queensland contributing 1,076 (50%) of these fine default only receptions. Queensland recorded the highest number of sentenced receptions during the March quarter 1999 with 3,644 prisoners followed by 1,922 in New South Wales and 1,102 in Western Australia.

During the March quarter 1999, the sentenced reception rate for Australia was 66 sentenced receptions per 100,000 adult population. The highest sentenced reception rates were recorded in the Northern Territory, followed by Queensland (436 and 139 persons per 100,000 adult population respectively). The lowest rate was recorded for The Australian Capital Territory sentenced prisoners held in New South Wales prisons, where there were 7 sentenced receptions per 100,000 adult population.

INDIGENOUS PRISONERS

Information on Indigenous persons in this publication is reported on a first day of the month basis. This information is not currently available for New South Wales (see Explanatory Notes, paragraph 10). Of the other States and Territories, on 1 March 1999 the highest number of Indigenous persons in prison custody was recorded in Queensland (1,110), followed by Western Australia (968) and the Northern Territory (476). The highest proportion of persons in prison custody who were Indigenous was recorded in the Northern Territory, where 76% of all prisoners were Indigenous, followed by Western Australia (34%) and Queensland (22%). The highest rates of Indigenous imprisonment were recorded in Western Australia (3,050 Indigenous persons per 100,000 adult Indigenous population), Queensland (1,820) and South Australia (1,600). The highest ratio of Indigenous to non-Indigenous rates of imprisonment was also recorded in Western Australia, which had an Indigenous rate of imprisonment 22 times the non-Indigenous rate.

PERIODIC DETENTION

In addition to persons in full-time prison custody, there was a daily average of 1,415 persons in New South Wales and 61 persons in the Australian Capital Territory held in periodic detention during the March quarter 1999.

FEDERAL PRISONERS

On 1 March 1999, there were 590 federal prisoners in Australia. There were 276 (47%) federal prisoners who were sentenced in New South Wales courts.

1

PERSONS IN PRISON CUSTODY(a)

Period	NSW(b)	Vic.	Qld	SA	WA	Tas.	NT	ACT in NSW(c)	ACT(d)	Aust.(c)
AVERAGE DAILY NUMBER										
1997	6 330	2 566	4 169	1 473	2 234	259	593	118	37	17 661
1998	6 516	2 796	4 874	1 403	2 389	302	607	118	37	18 923
1998										
March quarter	6 280	2 688	4 709	1 428	2 239	260	601	116	30	18 235
June quarter	6 401	2 794	4 888	1 396	2 292	283	602	114	37	18 692
September quarter	6 577	2 843	4 859	1 411	2 436	331	621	118	40	19 118
December quarter	6 801	2 857	5 037	1 377	2 585	332	602	123	40	19 631
1999										
March quarter	6 834	2 827	5 101	1 370	2 765	318	629	127	35	19 878
1998										
January	6 268	2 640	4 533	1 403	2 215	249	609	110	24	17 942
February	6 298	2 702	4 740	1 434	2 239	263	603	117	34	18 313
March	6 277	2 722	4 856	1 447	2 262	270	593	120	33	18 459
April	6 356	2 767	4 910	1 425	2 278	280	600	117	37	18 651
May	6 403	2 777	4 873	1 397	2 262	264	595	114	38	18 610
June	6 443	2 837	4 882	1 365	2 336	306	612	112	36	18 817
July	6 477	2 868	4 854	1 403	2 385	322	643	113	41	18 992
August	6 589	2 835	4 827	1 408	2 431	340	610	118	38	19 078
September	6 668	2 827	4 897	1 422	2 495	331	609	122	42	19 291
October	6 705	2 836	5 020	1 424	2 523	341	597	121	43	19 488
November	6 875	2 884	5 044	1 379	2 617	341	611	118	40	19 791
December	6 825	2 853	5 047	1 329	2 617	313	598	130	38	19 620
1999										
January	6 796	2 827	5 041	1 343	2 665	319	614	129	38	19 642
February	6 803	2 813	5 097	1 389	2 782	316	633	131	38	19 870
March	6 900	2 840	5 164	1 379	2 851	317	640	121	30	20 122

(a) Includes Work Outreach Camps and Community Custody Centres in Qld—see Explanatory Notes, paragraph 8.

(b) Persons sentenced to full-time custody in the ACT are held in NSW prisons. These persons are included in the NSW figures, as well as being reported separately under 'ACT in NSW'.

(c) The ACT in NSW figures refer to the persons described in (b) above. The figures are a single count taken on a specific day of the month and are not an average of the daily prisoner population for that month. The figures are a subset of the NSW figures and are NOT included in the totals for Australia.

(d) Refers to unsentenced persons in ACT prison custody—see Explanatory Notes, paragraph 14.

1

PERSONS IN PRISON CUSTODY(a) *continued*

<i>Period</i>	<i>NSW(b)</i>	<i>Vic.</i>	<i>Qld</i>	<i>SA</i>	<i>WA</i>	<i>Tas.</i>	<i>NT</i>	<i>ACT in NSW(c)</i>	<i>ACT(d)</i>	<i>Aust.(c)</i>
RATE PER 100,000 ADULT POPULATION										
1997	134.6	72.6	162.6	131.2	168.4	73.0	449.1	50.4	11.8	126.1
1998	137.5	78.5	188.2	124.4	177.9	85.0	455.7	50.4	15.8	134.3
1998										
March quarter	133.2	75.9	183.1	127.0	168.2	73.5	452.9	49.5	13.0	130.2
June quarter	135.4	78.6	189.1	123.9	171.5	79.9	451.6	49.0	15.8	133.0
September quarter	138.5	79.6	187.2	124.9	180.8	93.1	468.0	50.5	17.2	135.4
December quarter	142.8	79.7	193.2	121.8	190.9	93.3	450.2	52.7	17.2	138.6
1999										
March quarter	142.9	78.6	194.6	120.9	203.1	89.3	467.6	54.3	15.1	139.8
1998										
January	132.9	74.5	176.2	124.8	166.4	70.2	458.7	47.1	10.4	128.1
February	133.6	76.3	184.3	127.5	168.2	74.2	453.9	50.1	14.6	130.7
March	133.1	76.8	188.8	128.7	169.9	76.1	446.2	51.4	14.1	131.8
April	134.4	77.9	190.0	126.5	170.4	78.9	449.9	50.1	15.7	132.8
May	135.4	78.2	188.5	124.0	169.3	74.5	446.2	48.8	16.4	132.5
June	136.3	79.9	188.9	121.2	174.8	86.5	458.7	48.0	15.4	133.9
July	136.4	80.2	187.0	124.2	177.0	90.5	484.7	48.5	17.4	134.5
August	138.8	79.3	186.0	124.7	180.4	95.7	459.9	50.7	16.3	135.2
September	140.4	79.1	188.7	125.9	185.1	93.2	459.3	52.4	18.1	136.7
October	140.8	79.1	192.5	125.9	186.3	95.8	446.5	51.8	18.2	137.6
November	144.4	80.5	193.4	121.9	193.2	95.9	456.9	50.5	17.2	139.7
December	143.3	79.6	193.5	117.5	193.3	88.2	447.3	55.6	16.3	138.5
1999										
January	142.1	78.6	192.4	118.6	195.7	89.7	456.4	55.2	16.0	138.2
February	142.3	78.2	194.5	122.6	204.3	88.9	470.7	56.0	16.3	139.8
March	144.3	78.9	197.1	121.7	209.3	89.3	476.2	51.8	13.0	141.5

(a) Includes Work Outreach Centres and Community Custody Centres in Qld—see Explanatory Notes, paragraph 8.

(b) Persons sentenced to full-time custody in the ACT are held in NSW prisons. These persons are included in the NSW figures, as well as being reported separately under 'ACT in NSW'.

(c) The ACT in NSW figures refer to the persons described in (b) above. The figures are a single count taken on a specific day of the month and are not an average of the daily prisoner population for that month. The figures are a subset of the NSW figures and are NOT included in the totals for Australia.

(d) Refers to unsentenced persons in ACT prison custody—see Explanatory Notes, paragraph 14.

2

PERSONS IN PRISON CUSTODY, By Sex and Type of Prison Custody

Prison custody and sex	NSW(a)	Vic.	Qld	SA	WA	Tas.	NT	ACT in NSW(b)	ACT(c)	Aust.(b)
AVERAGE DAILY NUMBER										
Males										
Secure prison custody										
1998	3 381	2 341	3 716	1 137	1 462	198	465	32	34	12 733
1998										
March quarter	3 217	2 253	3 618	1 154	1 399	172	471	34	26	12 310
June quarter	3 226	2 325	3 720	1 126	1 390	179	460	31	34	12 458
September quarter	3 438	2 382	3 698	1 150	1 470	218	477	32	39	12 871
December quarter	3 636	2 401	3 826	1 117	1 588	221	454	32	38	13 280
1999										
March quarter	3 661	2 371	3 851	1 103	1 706	207	478	38	33	13 409
January	3 676	2 388	3 828	1 080	1 689	203	466	39	35	13 365
February	3 707	2 365	3 841	1 117	1 709	195	482	39	35	13 451
March	3 605	2 359	3 884	1 113	1 719	220	487	36	28	13 415
Open prison custody										
1998	2 792	301	892	187	766	93	113	79	..	5 142
1998										
March quarter	2 763	290	840	192	690	80	103	75	..	4 958
June quarter	2 850	313	902	189	746	94	113	77	..	5 206
September quarter	2 778	305	901	184	810	99	117	79	..	5 194
December quarter	2 776	294	922	182	817	98	118	86	..	5 208
1999										
March quarter	2 779	283	959	193	848	99	122	82	..	5 282
January	2 724	268	930	189	779	104	118	84	..	5 112
February	2 715	275	966	197	857	109	124	85	..	5 243
March	2 891	304	982	194	909	84	125	78	..	5 489
Total prison custody										
1998	6 172	2 641	4 607	1 324	2 228	290	579	112	34	17 875
1998										
March quarter	5 980	2 543	4 458	1 346	2 089	252	574	109	26	17 268
June quarter	6 075	2 638	4 622	1 315	2 135	272	573	108	34	17 664
September quarter	6 215	2 687	4 599	1 334	2 279	317	595	112	39	18 065
December quarter	6 412	2 695	4 748	1 300	2 405	319	572	117	38	18 488
1999										
March quarter	6 440	2 653	4 810	1 296	2 554	305	600	120	33	18 691
January	6 400	2 656	4 758	1 269	2 468	307	584	123	35	18 477
February	6 422	2 640	4 807	1 314	2 566	304	605	124	35	18 694
March	6 496	2 663	4 866	1 307	2 628	304	611	114	28	18 903

(a) Persons sentenced to full-time custody in the ACT are held in NSW prisons.

These persons are included in the NSW figures, as well as being reported separately under 'ACT in NSW'.

(b) The ACT in NSW figures refer to the persons described in (a) above. The figures are a single count taken on a specific day of the month and are not an average of the daily prisoner population for that month. The figures are a subset of the NSW figures and are NOT included in the totals for Australia.

(c) Refers to unsentenced persons in ACT prison custody—see Explanatory Notes, paragraph 14.

2

PERSONS IN PRISON CUSTODY, By Sex and Type of Prison Custody *continued*

<i>Prison custody and sex</i>	<i>NSW(a)</i>	<i>Vic.</i>	<i>Qld</i>	<i>SA</i>	<i>WA</i>	<i>Tas.</i>	<i>NT</i>	<i>ACT in NSW(b)</i>	<i>ACT(c)</i>	<i>Aust.(b)</i>
AVERAGE DAILY NUMBER										
Females										
Secure prison custody										
1998	223	125	195	79	100	12	28	—	3	764
1998										
March quarter	190	117	191	82	90	8	28	—	4	710
June quarter	208	123	191	81	98	11	29	—	4	743
September quarter	234	126	194	77	93	14	26	—	2	766
December quarter	259	132	205	78	119	13	30	—	3	837
1999										
March quarter	265	143	199	74	142	13	29	—	3	866
January	267	139	202	74	137	12	30	—	3	863
February	251	143	199	75	146	12	28	—	3	856
March	275	147	197	72	144	14	29	—	2	879
Open prison custody										
1998	122	30	71	—	61	—	—	6	..	284
1998										
March quarter	111	27	60	—	60	—	—	7	..	257
June quarter	118	33	76	—	59	—	—	6	..	285
September quarter	128	31	65	—	64	—	—	6	..	288
December quarter	130	30	84	—	61	—	—	6	..	306
1999										
March quarter	129	31	91	—	70	—	—	7	..	321
January	129	32	81	—	60	—	—	6	..	302
February	130	30	91	—	69	—	—	7	..	320
March	129	30	101	—	79	—	—	7	..	339
Total prison custody										
1998	344	155	267	79	161	12	28	6	3	1 048
1998										
March quarter	300	144	251	82	150	8	28	7	4	967
June quarter	325	156	267	81	157	11	29	6	4	1 028
September quarter	362	157	260	77	157	14	26	6	2	1 053
December quarter	389	162	289	78	180	13	30	6	3	1 143
1999										
March quarter	394	174	290	74	211	13	29	7	3	1 187
January	396	171	283	74	197	12	30	6	3	1 165
February	381	173	290	75	215	12	28	7	3	1 177
March	404	177	298	72	223	14	29	7	2	1 219

- (a) Persons sentenced to full-time custody in the ACT are held in NSW prisons. These persons are included in the NSW figures, as well as being reported separately under 'ACT in NSW'.
- (b) The ACT in NSW figures refer to the persons described in (a) above. The figures are a single count taken on a specific day of the month and are not an average of the daily prisoner population for that month. The figures are a subset of the NSW figures and are NOT included in the totals for Australia.
- (c) Refers to unsentenced persons in ACT prison custody—see Explanatory Notes, paragraph 14.

<i>Prison custody and sex</i>	<i>NSW(a)</i>	<i>Vic.</i>	<i>Qld</i>	<i>SA</i>	<i>WA</i>	<i>Tas.</i>	<i>NT</i>	<i>ACT in NSW(b)</i>	<i>ACT(c)</i>	<i>Aust.(b)</i>
AVERAGE DAILY NUMBER										
Persons										
Secure prison custody										
1998	3 603	2 465	3 911	1 216	1 562	209	493	32	37	13 497
1998										
March quarter	3 407	2 370	3 809	1 236	1 489	181	498	34	30	13 020
June quarter	3 433	2 448	3 910	1 206	1 488	189	489	31	37	13 200
September quarter	3 672	2 508	3 892	1 227	1 563	232	503	32	40	13 637
December quarter	3 895	2 533	4 031	1 195	1 707	234	484	32	40	14 118
1999										
March quarter	3 926	2 514	4 051	1 177	1 847	219	507	38	35	14 275
January	3 943	2 527	4 030	1 154	1 826	215	495	39	38	14 228
February	3 958	2 508	4 040	1 192	1 855	207	509	39	38	14 307
March	3 880	2 506	4 081	1 185	1 862	234	516	36	30	14 294
Open prison custody										
1998	2 913	331	963	187	827	93	113	85	..	5 427
1998										
March quarter	2 874	318	900	192	750	80	103	82	..	5 216
June quarter	2 967	345	978	189	804	94	113	83	..	5 491
September quarter	2 905	336	967	184	874	99	117	85	..	5 482
December quarter	2 906	324	1 006	182	878	98	118	91	..	5 513
1999										
March quarter	2 908	313	1 050	193	918	99	122	89	..	5 603
January	2 853	300	1 011	189	839	104	118	90	..	5 414
February	2 845	305	1 057	197	927	109	124	92	..	5 563
March	3 020	334	1 083	194	989	84	125	85	..	5 828
Total prison custody										
1998	6 516	2 796	4 874	1 403	2 389	302	607	118	37	18 923
1998										
March quarter	6 280	2 688	4 709	1 428	2 239	260	601	116	30	18 235
June quarter	6 401	2 794	4 888	1 396	2 292	283	602	114	37	18 692
September quarter	6 577	2 843	4 859	1 411	2 436	331	621	118	40	19 118
December quarter	6 801	2 857	5 037	1 377	2 585	332	602	123	40	19 631
1999										
March quarter	6 834	2 827	5 101	1 370	2 765	318	629	127	35	19 878
January	6 796	2 827	5 041	1 343	2 665	319	614	129	38	19 642
February	6 803	2 813	5 097	1 389	2 782	316	633	131	38	19 870
March	6 900	2 840	5 164	1 379	2 851	317	640	121	30	20 122

(a) Persons sentenced to full-time custody in the ACT are held in NSW prisons.

These persons are included in the NSW figures, as well as being reported separately under 'ACT in NSW'.

(b) The ACT in NSW figures refer to the persons described in (a) above. The figures are a single count taken on a specific day of the month and are not an average of the daily prisoner population for that month. The figures are a subset of the NSW figures and are NOT included in the totals for Australia.

(c) Refers to unsentenced persons in ACT prison custody—see Explanatory Notes, paragraph 14.

<i>Prison custody and sex</i>	<i>NSW(a)</i>	<i>Vic</i>	<i>Qld</i>	<i>SA</i>	<i>WA</i>	<i>Tas.</i>	<i>NT</i>	<i>ACT in NSW(b)</i>	<i>ACT(c)</i>	<i>Aust.(b)</i>
RATE PER 100,000 ADULT POPULATION										
Males										
Secure prison custody										
1998	145.2	134.4	288.9	206.2	218.1	114.2	656.4	28.1	29.5	183.6
1998										
March quarter	138.9	130.2	283.1	209.9	210.5	99.7	665.3	29.3	22.7	178.5
June quarter	138.9	134.0	289.7	204.5	208.3	103.3	647.3	27.3	29.2	180.1
September quarter	147.3	136.4	287.0	208.4	218.4	125.9	676.2	28.1	33.5	185.1
December quarter	155.3	137.0	295.5	202.1	234.8	127.7	636.8	27.5	32.5	190.4
1999										
March quarter	155.8	134.8	296.0	199.2	250.7	119.2	667.4	33.0	28.2	191.4
January	156.4	135.8	294.2	195.1	248.3	117.4	650.4	33.9	30.1	190.8
February	157.7	134.5	295.2	201.8	251.3	112.6	672.6	33.8	30.5	192.0
March	153.4	134.1	298.5	201.1	252.7	127.1	679.7	31.3	24.3	191.5
Open prison custody										
1998	119.9	17.3	69.3	33.9	114.3	53.5	159.5	69.0	..	74.1
1998										
March quarter	119.3	16.8	65.8	34.9	103.8	46.1	145.9	65.5	..	71.9
June quarter	122.7	18.0	70.2	34.4	111.8	54.4	159.5	67.1	..	75.3
September quarter	119.0	17.5	69.9	33.4	120.3	56.9	166.3	69.1	..	74.7
December quarter	118.6	16.8	71.2	33.0	120.8	56.6	166.2	74.3	..	74.7
1999										
March quarter	118.2	16.1	73.7	34.9	124.7	56.9	170.4	71.1	..	75.4
January	115.9	15.2	71.5	34.1	114.6	59.9	165.0	72.6	..	73.0
February	115.5	15.6	74.2	35.6	126.0	63.0	172.5	73.5	..	74.8
March	123.0	17.3	75.5	35.0	133.7	48.4	173.9	67.5	..	78.4
Total prison custody										
1998	265.0	151.7	358.2	240.1	332.3	167.8	815.9	97.1	29.5	257.7
1998										
March quarter	258.1	147.0	348.9	244.8	314.4	145.8	811.2	94.8	22.7	250.3
June quarter	261.6	152.1	360.0	238.9	320.1	157.6	806.8	94.4	29.2	255.4
September quarter	266.3	153.8	356.9	241.8	338.7	182.8	842.5	97.2	33.5	259.8
December quarter	273.9	153.8	366.7	235.1	355.7	184.3	803.0	101.8	32.5	265.0
1999										
March quarter	274.0	150.9	369.7	234.2	375.4	176.1	837.8	104.1	28.2	266.8
January	272.3	151.0	365.7	229.3	362.9	177.3	815.4	106.6	30.1	263.8
February	273.2	150.1	369.5	237.4	377.3	175.5	845.2	107.4	30.5	266.9
March	276.4	151.4	374.0	236.1	386.3	175.4	853.7	98.8	24.3	269.9

(a) Persons sentenced to full-time custody in the ACT are held in NSW prisons. These persons are included in the NSW figures, as well as being reported separately under 'ACT in NSW'.

(b) The ACT in NSW figures refer to the persons described in (a) above. The figures are a single count taken on a specific day of the month and are not an average of the daily prisoner population for that month. The figures are a subset of the NSW figures and are NOT included in the totals for Australia.

(c) Refers to unsentenced persons in ACT prison custody—see Explanatory Notes, paragraph 14.

2

PERSONS IN PRISON CUSTODY, By Sex and Type of Prison Custody *continued*

<i>Prison custody and sex</i>	<i>NSW(a)</i>	<i>Vic</i>	<i>Qld</i>	<i>SA</i>	<i>WA</i>	<i>Tas.</i>	<i>NT</i>	<i>ACT in NSW(b)</i>	<i>ACT(c)</i>	<i>Aust.(b)</i>
RATE PER 100,000 ADULT POPULATION										
Females										
Secure prison custody										
1998	9.2	6.8	15.0	13.8	14.9	6.3	44.9	—	2.5	10.7
1998										
March quarter	7.9	6.4	14.7	14.3	13.5	4.6	44.3	—	3.5	10.0
June quarter	8.6	6.8	14.7	14.0	14.6	5.9	45.9	—	2.9	10.4
September quarter	9.7	6.9	14.9	13.3	13.8	7.9	41.7	—	1.4	10.7
December quarter	10.7	7.2	15.6	13.4	17.5	6.9	47.8	—	2.4	11.7
1999										
March quarter	10.9	7.8	15.1	12.7	20.8	6.9	45.7	—	2.2	12.0
January	11.0	7.6	15.3	12.8	20.0	6.6	47.2	—	2.3	12.0
February	10.3	7.8	15.1	12.9	21.4	6.6	43.9	—	2.5	11.9
March	11.3	8.0	14.9	12.4	21.0	7.5	46.0	—	1.9	12.2
Open prison custody										
1998	5.0	1.7	5.5	—	9.1	—	—	5.1	..	4.0
1998										
March quarter	4.6	1.5	4.6	—	9.0	—	—	5.6	..	3.6
June quarter	4.9	1.8	5.8	—	8.8	—	—	5.1	..	4.0
September quarter	5.3	1.7	5.0	—	9.5	—	—	5.1	..	4.0
December quarter	5.4	1.7	6.4	—	9.0	—	—	4.8	..	4.3
1999										
March quarter	5.3	1.7	6.9	—	10.2	—	—	5.6	..	4.4
January	5.3	1.7	6.1	—	8.8	—	—	5.1	..	4.2
February	5.3	1.6	6.9	—	10.2	—	—	5.9	..	4.4
March	5.3	1.6	7.7	—	11.6	—	—	5.9	..	4.7
Total prison custody										
1998	14.3	8.5	20.4	13.8	23.9	6.3	44.9	5.1	2.5	14.7
1998										
March quarter	12.5	8.0	19.4	14.3	22.5	4.6	44.3	5.6	3.5	13.6
June quarter	13.5	8.6	20.5	14.0	23.4	5.9	45.9	5.1	2.9	14.4
September quarter	15.0	8.6	19.9	13.3	23.2	7.9	41.7	5.1	1.4	14.7
December quarter	16.0	8.9	22.0	13.4	26.6	6.9	47.8	4.8	2.4	15.9
1999										
March quarter	16.2	9.4	22.0	12.7	31.0	6.9	45.7	5.6	2.2	16.5
January	16.3	9.3	21.4	12.8	28.8	6.6	47.2	5.1	2.3	16.1
February	15.7	9.4	22.0	12.9	31.6	6.6	43.9	5.9	2.5	16.3
March	16.6	9.6	22.6	12.4	32.7	7.5	46.0	5.9	1.9	16.9

(a) Persons sentenced to full-time custody in the ACT are held in NSW prisons. These persons are included in the NSW figures, as well as being reported separately under 'ACT in NSW'.

(b) The ACT in NSW figures refer to the persons described in (a) above. The figures are a single count taken on a specific day of the month and are not an average of the daily prisoner population for that month. The figures are a subset of the NSW figures and are NOT included in the totals for Australia.

(c) Refers to unsentenced persons in ACT prison custody—see Explanatory Notes, paragraph 14.

2

PERSONS IN PRISON CUSTODY, By Sex and Type of Prison Custody *continued*

<i>Prison custody and sex</i>	<i>NSW(a)</i>	<i>Vic</i>	<i>Qld</i>	<i>SA</i>	<i>WA</i>	<i>Tas.</i>	<i>NT</i>	<i>ACT in NSW(b)</i>	<i>ACT(c)</i>	<i>Aust.(b)</i>
RATE PER 100,000 ADULT POPULATION										
Persons										
Secure prison custody										
1998	76.0	69.2	151.0	107.8	116.3	58.9	370.7	13.8	15.8	95.8
1998										
March quarter	72.2	66.9	148.1	109.9	111.8	51.0	375.1	14.4	13.0	92.9
June quarter	72.6	68.9	151.3	107.1	111.3	53.4	366.5	13.4	15.8	94.0
September quarter	77.3	70.2	150.0	108.6	115.9	65.4	379.5	13.9	17.2	96.6
December quarter	81.8	70.7	154.6	105.6	126.1	65.7	361.6	13.6	17.2	99.7
1999										
March quarter	82.1	69.9	154.6	103.9	135.7	61.6	376.9	16.3	15.1	100.4
January	82.5	70.2	153.8	101.9	134.1	60.6	368.5	16.8	16.0	100.1
February	82.8	69.7	154.2	105.2	136.2	58.2	378.8	16.7	16.3	100.6
March	81.2	69.7	155.7	104.6	136.7	65.7	383.5	15.5	13.0	100.5
Open prison custody										
1998	61.5	9.3	37.2	16.6	61.6	26.1	85.0	36.6	..	38.5
1998										
March quarter	60.9	9.0	35.0	17.0	56.3	22.5	77.7	35.0	..	37.2
June quarter	62.8	9.7	37.8	16.8	60.2	26.5	85.0	35.5	..	39.1
September quarter	61.2	9.4	37.2	16.3	64.8	27.7	88.5	36.6	..	38.8
December quarter	61.0	9.0	38.6	16.1	64.9	27.6	88.6	39.1	..	38.9
1999										
March quarter	60.8	8.7	40.1	17.1	67.4	27.7	90.8	38.0	..	39.4
January	59.7	8.3	38.6	16.7	61.6	29.2	87.9	38.4	..	38.1
February	59.5	8.5	40.3	17.4	68.0	30.7	91.9	39.3	..	39.1
March	63.2	9.3	41.3	17.1	72.6	23.6	92.7	36.3	..	41.0
Total prison custody										
1998	137.5	78.5	188.2	124.4	177.9	85.0	455.7	50.4	15.8	134.3
1998										
March quarter	133.2	75.9	183.1	127.0	168.2	73.5	452.9	49.5	13.0	130.2
June quarter	135.4	78.6	189.1	123.9	171.5	79.9	451.6	49.0	15.8	133.0
September quarter	138.5	79.6	187.2	124.9	180.8	93.1	468.0	50.5	17.2	135.4
December quarter	142.8	79.7	193.2	121.8	190.9	93.3	450.2	52.7	17.2	138.6
1999										
March quarter	142.9	78.6	194.6	120.9	203.1	89.3	467.6	54.3	15.1	139.8
January	142.1	78.6	192.4	118.6	195.7	89.7	456.4	55.2	16.0	138.2
February	142.3	78.2	194.5	122.6	204.3	88.9	470.7	56.0	16.3	139.8
March	144.3	78.9	197.1	121.7	209.3	89.3	476.2	51.8	13.0	141.5

- (a) Persons sentenced to full-time custody in the ACT are held in NSW prisons. These persons are included in the NSW figures, as well as being reported separately under 'ACT in NSW'.
- (b) The ACT in NSW figures refer to the persons described in (a) above. The figures are a single count taken on a specific day of the month and are not an average of the daily prisoner population for that month. The figures are a subset of the NSW figures and are NOT included in the totals for Australia.
- (c) Refers to unsentenced persons in ACT prison custody—see Explanatory Notes, paragraph 14.

3

PERSONS IN PRISON CUSTODY, By Legal Status and Sentence Type

Legal status and sentence type	NSW(a)	Vic.	Qld	SA	WA	Tas.	NT	ACT in NSW(b)	ACT(c)	Aust.(b)
NUMBER ON FIRST DAY OF MONTH										
Unsentenced										
1998(d)	1 115	434	523	256	309	51	81	..	37	2 806
1998										
March quarter(d)	1 045	457	473	256	284	31	79	..	28	2 653
June quarter(d)	1 062	449	508	264	285	53	80	..	37	2 737
September quarter(d)	1 132	r412	548	251	317	59	r83	..	41	r2 842
December quarter(d)	1 221	419	561	252	351	60	84	..	42	2 991
1999										
March quarter(d)	1 268	460	603	269	381	55	99	5	42	3 178
January	1 256	454	567	231	358	65	95	4	42	3 068
February	1 292	470	604	290	397	50	93	6	44	3 240
March	1 257	457	637	286	388	51	108	3	41	3 225
Sentenced										
Fine default only										
1998(d)	1	n.a.	171	50	44	3	19	—	..	n.a.
1998										
March quarter(d)	2	n.a.	157	59	24	2	16	1	..	n.a.
June quarter(d)	1	n.a.	155	43	40	1	19	—	..	n.a.
September quarter(d)	—	9	133	48	54	5	r21	—	..	270
December quarter(d)	1	8	238	52	59	5	20	—	..	384
1999										
March quarter(d)	—	4	257	61	82	17	23	5	..	444
January	—	5	261	56	73	19	14	—	..	428
February	—	3	263	67	79	16	29	7	..	457
March	1	5	247	60	93	16	26	7	..	448
Other sentenced										
1998	5 390	n.a.	4 147	1 097	2 018	248	507	116	..	n.a.
1998(d)										
March quarter(d)	5 223	n.a.	4 087	1 096	1 924	224	513	105	..	n.a.
June quarter(d)	5 321	n.a.	4 190	1 106	1 948	227	497	117	..	n.a.
September quarter(d)	5 439	2 409	4 119	1 097	2 042	263	519	118	..	15 888
December quarter(d)	5 575	2 429	4 193	1 089	2 160	277	499	123	..	16 222
1999										
March quarter(d)	5 554	2 360	4 200	1 045	2 243	261	492	120	..	16 155
January	5 532	2 376	4 189	1 054	2 162	230	479	125	..	16 022
February	5 508	2 358	4 189	1 023	2 237	301	502	118	..	16 118
March	5 622	2 347	4 221	1 057	2 331	252	496	118	..	16 326
Total sentenced										
1998(d)	5 391	2 349	4 318	1 147	2 063	251	526	116	..	16 045
1998										
March quarter(d)	5 225	2 223	4 245	1 154	1 948	226	530	106	..	15 551
June quarter(d)	5 322	2 319	4 346	1 149	1 988	228	516	117	..	15 866
September quarter(d)	5 439	2 418	4 252	1 145	2 096	268	r540	118	..	r16 158
December quarter(d)	5 577	2 437	4 431	1 141	2 218	282	519	123	..	16 606
1999										
March quarter(d)	5 554	2 365	4 457	1 106	2 325	278	515	125	..	16 600
January	5 532	2 381	4 450	1 110	2 235	249	493	125	..	16 450
February	5 508	2 361	4 452	1 090	2 316	317	531	125	..	16 575
March	5 623	2 352	4 468	1 117	2 424	268	522	125	..	16 774

(a) Persons sentenced to full-time custody in the ACT are held in NSW prisons. (c) Refers to unsentenced persons in ACT prison custody—see Explanatory Notes, paragraph 14. These are included in the NSW figures, as well as being reported separately.

(b) The ACT in NSW figures refer to the persons described in (a) above. The figures are a subset of the NSW figures and are NOT included in the totals for Australia. Unsentenced ACT in NSW numbers are reported on a daily average basis—see Explanatory Notes, paragraph 4. (d) Figures for the quarter for first day of the month counts are calculated as a simple average—see Explanatory Notes, paragraph 5.

3

PERSONS IN PRISON CUSTODY, By Legal Status and Sentence Type *continued*

<i>Legal status and sentence type</i>	<i>NSW(a)</i>	<i>Vic.</i>	<i>Qld</i>	<i>SA</i>	<i>WA</i>	<i>Tas.</i>	<i>NT</i>	<i>ACT in NSW(b)</i>	<i>ACT(c)</i>	<i>Aust.(b)</i>
NUMBER ON FIRST DAY OF MONTH										
Total										
1998(d)	6 506	2 784	4 841	1 403	2 372	302	608	116	37	18 851
1998										
March quarter(d)	6 270	2 680	4 718	1 410	2 232	258	609	106	28	18 204
June quarter(d)	6 383	2 768	4 853	1 413	2 272	281	596	117	37	18 603
September quarter(d)	6 571	2 830	4 800	1 396	2 413	327	622	118	41	19 000
December quarter(d)	6 798	2 857	4 993	1 393	2 569	342	603	123	42	19 597
1999										
March quarter(d)	6 823	2 825	5 059	1 375	2 706	333	614	130	42	19 777
January	6 788	2 835	5 017	1 341	2 593	314	588	129	42	19 518
February	6 800	2 831	5 056	1 380	2 713	367	624	131	44	19 815
March	6 880	2 809	5 105	1 403	2 812	319	630	128	41	19 999

- (a) Persons sentenced to full-time custody in the ACT are held in NSW prisons. These persons are included in the NSW figures, as well as being reported separately under 'ACT in NSW'.
- (b) The ACT in NSW figures refer to the persons described in (a) above. The figures are a subset of the NSW figures and are NOT included in the totals for Australia.
- (c) Refers to unsentenced persons in ACT prison custody—see Explanatory Notes, paragraph 14.
- (d) Figures for the quarter for first day of the month counts are calculated as a simple average—see Explanatory Notes, paragraph 5.

3

PERSONS IN PRISON CUSTODY, By Legal Status and Sentence Type *continued*

Legal status and sentence type	NSW(a)	Vic.	Qld	SA		Tas.	NT	ACT in NSW(b)	ACT(c)	Aust.(b)
				SA	WA					
RATE PER 100,000 ADULT POPULATION										
Unsentenced										
1998(d)	23.5	12.2	20.2	22.7	23.0	14.3	61.2	..	15.9	19.9
1998										
March quarter(d)	22.2	12.9	18.4	22.8	21.3	8.8	59.5	..	12.0	18.9
June quarter(d)	22.5	12.6	19.6	23.4	21.3	14.9	60.3	..	15.8	19.5
September quarter(d)	23.8	11.5	21.1	22.2	23.5	16.7	62.3	..	17.8	20.1
December quarter(d)	25.6	11.7	21.5	22.3	25.9	16.9	62.6	..	18.0	21.1
1999										
March quarter(d)	26.5	12.8	23.0	23.7	28.0	15.6	73.4	1.9	18.1	22.4
January	26.3	12.6	21.6	20.4	26.3	18.3	70.7	1.8	17.9	21.6
February	27.0	13.1	23.0	25.6	29.2	14.1	69.2	2.6	18.8	22.8
March	26.3	12.7	24.3	25.2	28.5	14.3	80.3	1.4	17.5	22.7
Sentenced										
Fine default only										
1998(d)	—	n.a.	6.6	4.5	3.3	0.9	14.4	—	..	n.a.
1998										
March quarter(d)	—	n.a.	6.1	5.2	1.8	0.6	12.3	0.4	..	n.a.
June quarter(d)	—	n.a.	6.0	3.8	3.0	0.3	14.3	—	..	n.a.
September quarter(d)	—	0.3	5.1	4.2	4.0	1.4	15.8	—	..	1.9
December quarter(d)	—	0.2	9.1	4.6	4.3	1.5	15.2	—	..	2.7
1999										
March quarter(d)	—	0.1	9.8	5.4	6.0	4.8	17.1	2.0	..	3.1
January	—	0.1	10.0	4.9	5.4	5.3	10.4	—	..	3.0
February	—	0.1	10.0	5.9	5.8	4.5	21.6	3.0	..	3.2
March	—	0.1	9.4	5.3	6.8	4.5	19.3	3.0	..	3.2
Other sentenced										
1998(d)	113.7	n.a.	160.1	97.3	150.3	69.8	380.9	49.6	..	n.a.
1998										
March quarter(d)	110.8	n.a.	158.9	97.4	144.5	63.3	386.5	44.9	..	n.a.
June quarter(d)	112.6	n.a.	162.1	98.2	145.7	64.1	372.6	50.1	..	n.a.
September quarter(d)	114.5	67.4	158.7	97.2	151.5	74.0	391.1	50.5	..	112.6
December quarter(d)	117.1	67.8	160.8	96.3	159.5	77.8	373.2	52.6	..	114.5
1999										
March quarter(d)	116.2	65.6	160.3	92.2	164.7	73.4	366.2	51.4	..	113.6
January	115.7	66.1	159.8	93.1	158.8	64.7	356.3	53.4	..	112.7
February	115.2	65.5	159.8	90.3	164.3	84.6	373.4	50.4	..	113.4
March	117.6	65.2	161.1	93.3	171.2	70.9	369.0	50.4	..	114.8
Total sentenced										
1998(d)	113.8	65.9	166.7	101.7	153.6	70.7	395.3	49.7	..	113.9
1998										
March quarter(d)	110.8	62.7	165.0	102.7	146.4	63.9	398.8	45.4	..	111.0
June quarter(d)	112.6	65.3	168.1	102.0	148.7	64.4	386.9	50.1	..	112.9
September quarter(d)	114.5	67.7	163.8	101.4	155.5	75.4	406.9	50.5	..	114.5
December quarter(d)	117.1	68.0	169.9	100.9	163.8	79.3	388.4	52.6	..	117.3
1999										
March quarter(d)	116.2	65.7	170.1	97.6	170.7	78.2	383.3	53.4	..	116.8
January	115.7	66.2	169.8	98.0	164.1	70.0	366.7	53.4	..	115.7
February	115.2	65.6	169.9	96.2	170.1	89.1	395.0	53.4	..	116.6
March	117.6	65.4	170.5	98.6	178.0	75.4	388.3	53.4	..	118.0

(a) Persons sentenced to full-time custody in the ACT are held in NSW prisons. These are included in the NSW figures, as well as being reported separately. (c) Refers to unsentenced persons in ACT prison custody—see Explanatory Notes, paragraph 14.

(b) The ACT in NSW figures refer to the persons described in (a) above. The figures are a subset of the NSW figures and are NOT included in the totals for Australia. Unsentenced ACT in NSW numbers are reported on a daily average basis—see Explanatory Notes, paragraph 4. (d) Figures for the quarter for first day of the month counts are calculated as a simple average—see Explanatory Notes, paragraph 5.

3

PERSONS IN PRISON CUSTODY, By Legal Status and Sentence Type *continued*

<i>Legal status and sentence type</i>	<i>NSW(a)</i>	<i>Vic.</i>	<i>Qld</i>	<i>SA</i>	<i>WA</i>	<i>Tas.</i>	<i>NT</i>	<i>ACT in NSW(b)</i>	<i>ACT(c)</i>	<i>Aust.(b)</i>
RATE PER 100,000 ADULT POPULATION										
Total										
1998(d)	137.3	78.1	186.9	124.4	176.6	85.1	456.4	49.7	15.9	133.8
1998										
March quarter(d)	133.0	75.6	183.4	125.4	167.7	72.7	458.3	45.4	12.0	130.0
June quarter(d)	135.0	77.9	187.8	125.4	170.0	79.2	447.1	50.1	15.8	132.4
September quarter(d)	138.4	79.2	185.0	123.6	179.0	92.1	469.3	50.5	17.8	134.6
December quarter(d)	142.8	79.7	191.5	123.2	189.8	96.2	451.0	52.6	18.0	138.4
1999										
March quarter(d)	142.7	78.5	193.1	121.4	198.7	93.7	456.7	55.3	18.1	139.1
January	142.0	78.8	191.4	118.4	190.4	88.3	437.4	55.2	17.9	137.3
February	142.2	78.7	192.9	121.8	199.2	103.2	464.2	56.0	18.8	139.4
March	143.9	78.1	194.8	123.9	206.5	89.7	468.6	54.8	17.5	140.7

(a) Persons sentenced to full-time custody in the ACT are held in NSW prisons. These persons are included in the NSW figures, as well as being reported separately under 'ACT in NSW'.

(b) The ACT in NSW figures refer to the persons described in (a) above. The figures are a subset of the NSW figures and are NOT included in the totals for Australia.

(c) Refers to unsentenced persons in ACT prison custody—see Explanatory Notes, paragraph 14.

(d) Figures for the quarter for first day of the month counts are calculated as a simple average—see Explanatory Notes, paragraph 5.

4

SENTENCED RECEPTIONS INTO PRISON CUSTODY, By Type of Sentence

Sentence type	NSW	Vic.(a)	Qld	SA	WA	Tas.	NT	ACT in NSW(b)	ACT	Aust.(b)
NUMBER										
Fine default only										
1998	55	70	3 813	1 810	533	292	824	5	..	7 397
1998										
March quarter	18	9	828	454	109	36	190	1	..	1 644
June quarter	14	18	698	347	117	63	218	1	..	1 475
September quarter	11	r23	902	490	149	131	196	3	..	1 902
December quarter	12	20	1 385	519	158	62	220	—	..	2 376
1999										
March quarter	11	15	1 076	510	195	51	294	2	..	2 152
January	2	2	379	135	69	19	132	1	..	738
February	2	5	336	178	72	16	61	1	..	670
March	7	8	361	197	54	16	101	—	..	744
Other sentenced										
1998	7 173	3 192	9 434	2 215	2 634	715	1 021	130	..	26 384
1998										
March quarter	1 667	567	2 315	448	585	114	239	42	..	5 935
June quarter	1 774	643	2 048	443	608	205	246	26	..	5 967
September quarter	1 792	r991	2 238	446	721	227	282	37	..	6 697
December quarter	1 940	991	2 833	878	720	169	254	25	..	7 785
1999										
March quarter	1 911	905	2 568	437	907	144	292	22	..	7 164
January	507	237	840	121	280	47	85	6	..	2 117
February	603	307	816	162	304	47	105	9	..	2 344
March	801	361	912	154	323	50	102	7	..	2 703
Total sentenced										
1998	7 228	3 262	13 247	4 025	3 167	1 007	1 845	135	..	33 781
1998										
March quarter	1 685	576	3 143	902	694	150	429	43	..	7 579
June quarter	1 788	661	2 746	790	725	268	464	27	..	7 442
September quarter	1 803	r1 014	3 140	936	870	358	478	40	..	8 599
December quarter	1 952	1 011	4 218	1 397	878	231	474	25	..	10 161
1999										
March quarter	1 922	920	3 644	947	1 102	195	586	24	..	9 316
January	509	239	1 219	256	349	66	217	7	..	3 601
February	605	312	1 152	340	376	63	166	10	..	3 319
March	808	369	1 273	351	377	66	203	7	..	3 241

(a) For the March and June quarters in 1998, persons reclassified from unsentenced to sentenced status during the month were not included in the reception figures for Vic. Information on sentenced receptions for Vic. for those two quarters is therefore not comparable with information for other States and Territories. From July 1998 persons reclassified from unsentenced to sentenced status have been included and Vic. information is thus comparable for September and December quarters 1998.

(b) Persons sentenced to full-time custody in the ACT are held in NSW prisons. The figures are a subset of the NSW figures and are NOT included in the totals for Australia—see Explanatory Notes, paragraph 14.

4

SENTENCED RECEPTIONS INTO PRISON CUSTODY, By Type of Sentence *continued*

Sentence type	NSW	Vic.(a)	Qld	SA	WA	Tas.	NT	ACT in NSW(b)	ACT	Aust.(b)
RATE PER 100,000 ADULT POPULATION										
Fine default only										
1998	1.2	2.0	147.1	160.5	39.7	82.2	619.0	2.1	..	52.5
1998										
March quarter	0.4	0.3	32.2	40.4	8.2	10.2	143.1	0.4	..	11.7
June quarter	0.3	0.5	27.0	30.8	8.8	17.8	163.6	0.4	..	10.5
September quarter	0.2	r0.6	34.8	43.4	11.1	36.8	147.8	1.3	..	13.5
December quarter	0.3	0.6	53.1	45.9	11.7	17.4	164.5	—	..	16.8
1999										
March quarter	0.2	0.4	41.1	45.0	14.3	14.3	218.7	0.9	..	15.1
January	—	0.1	14.5	11.9	5.1	5.3	98.2	0.4	..	5.2
February	—	0.1	12.8	15.7	5.3	4.5	45.4	0.4	..	4.7
March	0.1	0.2	13.8	17.4	4.0	4.5	75.1	—	..	5.2
Other sentenced										
1998	151.4	89.5	364.1	196.3	196.1	201.4	767.1	55.7	..	187.3
1998										
March quarter	35.4	16.0	90.0	39.8	43.9	32.2	180.0	18.0	..	42.4
June quarter	37.5	18.1	79.2	39.3	45.5	57.9	184.6	11.1	..	42.5
September quarter	37.7	r27.7	86.2	39.5	53.5	63.8	212.6	15.9	..	47.4
December quarter	40.7	27.6	108.6	77.6	53.2	47.5	190.0	10.7	..	55.0
1999										
March quarter	40.0	25.2	98.0	38.6	66.6	40.5	217.2	9.4	..	50.4
January	10.6	6.6	32.1	10.7	20.6	13.2	63.2	2.6	..	14.9
February	12.6	8.5	31.1	14.3	22.3	13.2	78.1	3.8	..	16.5
March	16.8	10.0	34.8	13.6	23.7	14.1	75.9	3.0	..	19.0
Total sentenced										
1998	152.5	91.4	511.2	356.7	235.8	283.7	1 386.1	57.8	..	239.7
1998										
March quarter	35.7	16.3	122.2	80.2	52.1	42.3	323.0	18.4	..	54.1
June quarter	37.8	r18.6	r106.2	r70.1	r54.2	r75.7	r348.1	r11.6	..	53.0
September quarter	38.0	r28.4	121.0	82.9	64.5	100.7	360.4	17.2	..	60.9
December quarter	41.0	28.2	161.8	123.5	64.8	65.0	354.5	10.7	..	71.8
1999										
March quarter	40.2	25.6	139.1	83.7	80.9	54.8	435.9	7.3	..	65.5
January	10.6	6.6	46.5	22.6	25.6	18.6	161.4	—	..	20.1
February	12.7	8.7	44.0	30.1	27.6	17.7	123.5	4.3	..	21.2
March	16.9	10.3	48.6	31.0	27.7	18.6	151.0	3.0	..	24.2

(a) For the March and June quarters in 1998, persons reclassified from unsentenced to sentenced status during the month were not included in the reception figures for Vic. Information on sentenced receptions for Vic. for those two quarters is therefore not comparable with information for other States and Territories. From July 1998 persons reclassified from unsentenced to sentenced status have been included and Vic. information is thus comparable for September and December quarters 1998.

(b) Persons sentenced to full-time custody in the ACT are held in NSW prisons. The figures are a subset of the NSW figures and are NOT included in the totals for Australia—see Explanatory Notes, paragraph 14.

5

INDIGENOUS PERSONS IN PRISON CUSTODY, By Sex(a) (b)

Sex	NSW(c)	Vic.(c)	Qld	SA	WA	Tas.	NT	ACT in NSW(c)(d)	ACT(e)	Aust.(d)
NUMBER ON FIRST DAY OF MONTH										
Males										
1998(f)	n.a.	n.a.	999	198	715	29	421	n.a.	5	n.a.
1998										
March quarter(f)	n.a.	n.a.	988	198	685	24	422	n.a.	5	n.a.
June quarter(f)	n.a.	121	1 016	211	683	28	407	n.a.	4	n.a.
September quarter(f)	n.a.	121	987	192	721	31	437	n.a.	6	n.a.
December quarter(f)	n.a.	116	1 003	191	769	31	418	n.a.	5	n.a.
1999										
March quarter(f)	n.a.	114	1 031	192	834	34	447	1	7	n.a.
January	n.a.	111	1 013	195	805	37	426	1	4	n.a.
February	n.a.	117	1 036	196	833	33	462	1	9	n.a.
March	n.a.	114	1 043	186	864	31	454	1	7	n.a.
Females										
1998(f)	n.a.	n.a.	67	15	71	2	18	n.a.	—	n.a.
1998										
March quarter(f)	n.a.	n.a.	70	12	72	1	19	n.a.	—	n.a.
June quarter(f)	n.a.	5	66	17	67	2	18	n.a.	—	n.a.
September quarter(f)	n.a.	8	64	16	70	2	15	n.a.	—	n.a.
December quarter(f)	n.a.	9	65	15	74	1	19	n.a.	—	n.a.
1999										
March quarter(f)	n.a.	9	68	14	92	2	20	n.a.	1	n.a.
January	n.a.	11	72	14	73	2	20	n.a.	—	n.a.
February	n.a.	10	65	14	98	2	17	n.a.	1	n.a.
March	n.a.	6	67	14	104	3	22	n.a.	1	n.a.
Persons										
1998(f)	n.a.	n.a.	1 065	213	785	30	439	n.a.	5	n.a.
1998										
March quarter(f)	n.a.	n.a.	1 058	210	757	26	441	n.a.	5	n.a.
June quarter(f)	n.a.	127	1 083	228	749	30	425	n.a.	4	n.a.
September quarter(f)	n.a.	128	1 052	208	792	33	451	n.a.	6	n.a.
December quarter(f)	n.a.	125	1 069	206	843	32	437	n.a.	5	n.a.
1999										
March quarter(f)	n.a.	123	1 099	206	926	36	467	1	7	n.a.
January	n.a.	122	1 085	209	878	39	446	1	4	n.a.
February	n.a.	127	1 101	210	931	35	479	1	10	n.a.
March	n.a.	120	1 110	200	968	34	476	1	8	n.a.

- (a) Some rates and ratios in this table have not been published—see Explanatory Notes, paragraph 22.
- (b) Persons in custody are asked their Indigenous status during reception into custody—see Explanatory Notes, paragraphs 11-13.
- (c) Numbers of Indigenous persons for NSW, and numbers of Indigenous persons for Vic. in February 1998, are unavailable—see Explanatory Notes, paragraph 10.
- (d) Persons sentenced to full-time custody in the ACT are held in NSW prisons. The figures are a subset of the NSW figures and are NOT included in the totals for Australia—see Explanatory Notes, paragraph 14.
- (e) Refers to unsentenced persons in ACT prison custody—see Explanatory Notes, paragraph 14.
- (f) Figures for the quarter for first day of the month counts are calculated as a simple average—see Explanatory Notes, paragraph 5.

5

INDIGENOUS PERSONS IN PRISON CUSTODY, By Sex(a) (b) *continued*

Sex	NSW(c)	Vic.(c)	Qld	SA	WA	Tas.	NT	ACT in NSW(c)(d)	ACT(e)	Aust.(d)
RATE PER 100,000 ADULT INDIGENOUS POPULATION										
Males										
1998(f)	n.a.	n.a.	3 470.0	3 354.9	4 710.4	675.9	2 802.2	n.a.	584.1	n.a.
1998										
March quarter(f)	n.a.	n.a.	3 567.6	3 409.1	4 658.3	603.2	2 917.8	n.a.	n.p.	n.a.
June quarter(f)	n.a.	1 856.4	3 485.5	3 559.6	4 455.8	648.1	2 673.9	n.a.	n.p.	n.a.
September quarter(f)	n.a.	1 846.2	3 386.0	3 234.0	4 708.1	726.2	2 868.8	n.a.	n.p.	n.a.
December quarter(f)	n.a.	1 774.8	3 440.9	3 217.1	5 019.3	726.2	2 748.4	n.a.	n.p.	n.a.
1999										
March quarter(f)	n.a.	1 744.2	3 534.6	3 239.6	5 443.5	788.6	2 938.9	n.a.	n.p.	n.a.
January	n.a.	1 698.3	3 474.1	3 284.5	5 254.2	866.7	2 798.8	n.a.	n.p.	n.a.
February	n.a.	1 790.1	3 552.9	3 301.3	5 437.0	773.0	3 035.3	n.a.	n.p.	n.a.
March	n.a.	1 744.2	3 576.9	3 132.9	5 639.3	726.2	2 982.7	n.a.	n.p.	n.a.
Females										
1998(f)	n.a.	n.a.	211.9	234.0	436.7	37.0	110.1	n.a.	—	n.a.
1998										
March quarter(f)	n.a.	n.a.	231.6	195.6	458.1	n.p.	121.2	n.a.	—	n.a.
June quarter(f)	n.a.	77.7	208.4	258.6	407.1	n.p.	111.9	n.a.	—	n.a.
September quarter(f)	n.a.	111.7	202.1	248.5	429.5	n.p.	91.2	n.a.	—	n.a.
December quarter(f)	n.a.	136.0	205.3	233.3	451.9	n.p.	116.1	n.a.	—	n.a.
1999										
March quarter(f)	n.a.	131.1	213.7	213.0	559.8	n.p.	105.7	n.a.	n.p.	n.a.
January	n.a.	160.3	226.2	213.0	445.8	n.p.	121.6	n.a.	—	n.a.
February	n.a.	145.7	204.2	213.0	598.5	n.p.	121.4	n.a.	n.p.	n.a.
March	n.a.	87.4	210.5	213.0	635.1	n.p.	136.8	n.a.	n.p.	n.a.
Persons										
1998(f)	n.a.	n.a.	1 769.7	1 719.1	2 502.6	346.1	1 417.7	n.a.	278.6	n.a.
1998										
March quarter(f)	n.a.	n.a.	1 826.6	1 736.4	2 488.8	308.0	1 475.3	n.a.	n.p.	n.a.
June quarter(f)	n.a.	945.3	1 775.3	1 825.2	2 364.1	339.9	1 357.7	n.a.	n.p.	n.a.
September quarter(f)	n.a.	957.7	1 724.4	1 665.3	2 497.7	373.9	1 441.8	n.a.	n.p.	n.a.
December quarter(f)	n.a.	935.3	1 752.3	1 649.3	2 659.6	362.6	1 396.0	n.a.	n.p.	n.a.
1999										
March quarter(f)	n.a.	917.9	1 801.5	1 649.3	2 920.5	407.9	1 491.3	n.a.	n.p.	n.a.
January	n.a.	910.4	1 779.1	1 670.7	2 770.1	441.9	1 423.3	n.a.	n.p.	n.a.
February	n.a.	947.8	1 805.3	1 678.7	2 937.3	396.6	1 530.2	n.a.	n.p.	n.a.
March	n.a.	895.5	1 820.1	1 598.7	3 054.0	385.2	1 520.6	n.a.	n.p.	n.a.

(a) Some rates and ratios in this table have not been published—see Explanatory Notes, paragraph 22.

(b) Persons in custody are asked their Indigenous status during reception into custody—see Explanatory Notes, paragraphs 11-13.

(c) Numbers of Indigenous persons for NSW, and numbers of Indigenous persons for Vic. in February 1998, are unavailable—see Explanatory Notes, paragraph 10.

(d) Persons sentenced to full-time custody in the ACT are held in NSW prisons. The figures are a subset of the NSW figures and are NOT included in the totals for Australia—see Explanatory Notes, paragraph 14.

(e) Refers to unsentenced persons in ACT prison custody—see Explanatory Notes, paragraph 14.

(f) Figures for the quarter for first day of the month counts are calculated as a simple average—see Explanatory Notes, paragraph 5.

5

INDIGENOUS PERSONS IN PRISON CUSTODY, By Sex(a) (b) *continued*

Sex	NSW(c)	Vic.(c)	Qld	SA	WA	Tas.	NT	ACT in NSW(c)(d)	ACT(e)	Aust.(d)
RATIO OF INDIGENOUS TO NON-INDIGENOUS RATES OF IMPRISONMENT										
Males										
1998(f)	n.a.	n.a.	12.2	16.3	20.6	4.4	9.9	n.a.	27.4.	n.a.
1998										
March quarter(f)	n.a.	n.a.	12.9	16.4	21.6	4.5	10.5	n.a.	n.p.	n.a.
June quarter(f)	n.a.	12.9	12.3	17.3	20.3	4.5	9.3	n.a.	n.p.	n.a.
September quarter(f)	n.a.	12.6	12.0	15.7	20.2	4.4	10.0	n.a.	n.p.	n.a.
December quarter(f)	n.a.	12.0	11.7	15.7	20.4	4.1	9.9	n.a.	n.p.	n.a.
1999										
March quarter(f)	n.a.	12.1	12.0	16.0	21.6	4.7	12.0	n.a.	n.p.	n.a.
January	n.a.	11.7	11.9	16.7	21.7	5.5	11.8	n.a.	n.p.	n.a.
February	n.a.	12.4	12.1	16.3	21.6	4.1	12.6	n.a.	n.p.	n.a.
March	n.a.	12.1	12.1	15.0	21.6	4.5	11.5	n.a.	n.p.	n.a.
Females										
1998(f)	n.a.	n.a.	13.3	21.0	31.4	n.p.	5.0	n.a.	—	n.a.
1998										
March quarter(f)	n.a.	n.a.	14.8	17.4	39.4	n.p.	6.1	n.a.	—	n.a.
June quarter(f)	n.a.	9.7	13.1	24.0	29.6	n.p.	5.4	n.a.	—	n.a.
September quarter(f)	n.a.	14.0	13.1	21.6	27.8	n.p.	3.5	n.a.	—	n.a.
December quarter(f)	n.a.	16.2	12.3	20.8	28.9	n.p.	4.9	n.a.	—	n.a.
1999										
March quarter(f)	n.a.	14.4	12.5	20.4	34.3	n.p.	6.5	n.a.	n.p.	n.a.
January	n.a.	18.1	13.5	21.4	27.7	n.p.	6.0	n.a.	n.p.	n.a.
February	n.a.	15.7	12.3	20.3	37.2	n.p.	5.5	n.a.	n.p.	n.a.
March	n.a.	9.5	11.7	19.4	38.1	n.p.	8.0	n.a.	n.p.	n.a.
Persons										
1998(f)	n.a.	n.a.	11.8	16.0	20.4	4.4	8.1	n.a.	9.3	n.a.
1998										
March quarter(f)	n.a.	n.a.	12.6	16.2	22.0	4.6	9.1	n.a.	n.p.	n.a.
June quarter(f)	n.a.	12.7	11.9	17.2	20.3	4.7	8.1	n.a.	n.p.	n.a.
September quarter(f)	n.a.	12.5	11.3	15.1	19.1	4.3	6.4	n.a.	n.p.	n.a.
December quarter(f)	n.a.	12.2	11.4	15.6	20.4	4.1	8.6	n.a.	n.p.	n.a.
1999										
March quarter(f)	n.a.	12.2	11.6	15.8	21.8	4.8	10.5	n.a.	n.p.	n.a.
January	n.a.	12.0	11.6	16.5	21.5	5.6	10.3	n.a.	n.p.	n.a.
February	n.a.	12.6	11.7	16.1	21.9	4.1	10.9	n.a.	n.p.	n.a.
March	n.a.	11.9	11.7	14.9	22.0	4.7	10.2	n.a.	n.p.	n.a.

- (a) Some rates and ratios in this table have not been published—see Explanatory Notes, paragraph 22.
- (b) Persons in custody are asked their Indigenous status during reception into custody—see Explanatory Notes, paragraphs 11-13.
- (c) Numbers of Indigenous persons for NSW, and numbers of Indigenous persons for Vic. in February 1998, are unavailable—see Explanatory Notes, paragraph 10.
- (d) Persons sentenced to full-time custody in the ACT are held in NSW prisons. The figures are a subset of the NSW figures and are NOT included in the totals for Australia—see Explanatory Notes, paragraph 14.
- (e) Refers to unsentenced persons in ACT prison custody—see Explanatory Notes, paragraph 14.
- (f) Figures for the quarter for first day of the month counts are calculated as a simple average—see Explanatory Notes, paragraph 5.

6

INDIGENOUS PERSONS IN PRISON CUSTODY, By Legal Status and Sentence Type(a) (b)

Legal status and sentence type	NSW(c)	Vic.(c)	Qld	SA	WA	Tas.	NT	ACT in		
								NSW(c)(d)	ACT(e)	Aust.(d)
NUMBER ON FIRST DAY OF MONTH										
Unsentenced										
1998(f)	n.a.	n.a.	102	50	97	5	51	..	5	n.a.
1998										
March quarter(f)	n.a.	n.a.	87	51	93	3	44	..	5	n.a.
June quarter(f)	n.a.	22	108	55	88	7	50	..	4	n.a.
September quarter(f)	n.a.	18	109	47	96	5	58	..	6	n.a.
December quarter(f)	n.a.	20	104	47	111	4	51	..	5	n.a.
1999										
March quarter(f)	n.a.	26	121	58	137	7	66	..	7	n.a.
January	n.a.	23	114	61	129	8	64	..	4	n.a.
February	n.a.	29	122	60	150	5	63	..	10	n.a.
March	n.a.	27	128	53	131	7	70	..	8	n.a.
Sentenced										
Fine default only										
1998(f)	n.a.	n.a.	46	14	20	—	13	n.a.	..	n.a.
1998										
March quarter(f)	n.a.	n.a.	46	15	12	—	12	n.a.	..	n.a.
June quarter(f)	n.a.	n.a.	42	14	16	1	14	n.a.	..	n.a.
September quarter(f)	n.a.	1	32	13	24	—	12	n.a.	..	n.a.
December quarter(f)	n.a.	1	62	13	26	—	15	n.a.	..	n.a.
1999										
March quarter(f)	n.a.	—	53	13	44	—	19	n.a.	..	n.a.
January	n.a.	—	52	14	43	—	12	n.a.	..	n.a.
February	n.a.	—	53	11	40	—	26	n.a.	..	n.a.
March	n.a.	—	53	13	48	—	20	n.a.	..	n.a.
Other sentenced										
1998(f)	n.a.	n.a.	917	150	669	25	374	n.a.	..	n.a.
1998										
March quarter(f)	n.a.	n.a.	925	145	652	23	385	n.a.	..	n.a.
June quarter(f)	n.a.	n.a.	932	160	645	22	360	n.a.	..	n.a.
September quarter(f)	n.a.	109	910	149	672	28	381	n.a.	..	n.a.
December quarter(f)	n.a.	105	902	146	706	28	371	n.a.	..	n.a.
1999										
March quarter(f)	n.a.	97	925	136	745	29	382	n.a.	..	n.a.
January	n.a.	99	919	134	706	31	371	n.a.	..	n.a.
February	n.a.	98	926	139	741	30	390	n.a.	..	n.a.
March	n.a.	93	929	134	789	27	386	n.a.	..	n.a.

(a) Some rates in this table have not been published—see Explanatory Notes, paragraph 22.

(b) Persons in custody are asked their Indigenous status during reception into custody—see Explanatory Notes, paragraphs 11-13.

(c) Numbers of Indigenous persons for NSW, and numbers of Indigenous persons for Vic. in February 1998, are unavailable—see Explanatory Notes, paragraph 10.

(d) Persons sentenced to full-time custody in the ACT are held in NSW prisons. The figures are a subset of the NSW figures and are NOT included in the totals for Australia—see Explanatory Notes, paragraph 14.

(e) Refers to unsentenced persons in ACT prison custody—see Explanatory Notes, paragraph 14.

(f) Figures for the quarter for first day of the month counts are calculated as a simple average—see Explanatory Notes, paragraph 5.

Legal status and sentence type	NSW(c)	Vic.(c)	Qld	SA	WA	Tas.	NT	ACT in NSW(c)(d)	ACT(e)	Aust.(d)
NUMBER ON FIRST DAY OF MONTH										
Total sentenced 1998(f)	n.a.	n.a.	963	163	688	26	388	n.a.	..	n.a.
1998										
March quarter(f)	n.a.	n.a.	971	159	664	23	397	n.a.	..	n.a.
June quarter(f)	n.a.	105	975	174	661	23	375	n.a.	..	n.a.
September quarter(f)	n.a.	110	942	161	696	28	393	n.a.	..	n.a.
December quarter(f)	n.a.	106	964	159	732	28	386	n.a.	..	n.a.
1999										
March quarter(f)	n.a.	97	977	148	789	29	402	n.a.	..	n.a.
January	n.a.	99	971	148	749	31	383	n.a.	..	n.a.
February	n.a.	98	979	150	781	30	416	n.a.	..	n.a.
March	n.a.	93	982	147	837	27	406	n.a.	..	n.a.
Total 1998(f)	n.a.	n.a.	1 065	213	785	30	439	n.a.	5	n.a.
1998										
March quarter(f)	n.a.	n.a.	1 058	210	757	26	441	n.a.	5	n.a.
June quarter(f)	n.a.	127	1 083	228	749	30	425	n.a.	4	n.a.
September quarter(f)	n.a.	128	1 052	208	792	33	451	n.a.	6	n.a.
December quarter(f)	n.a.	125	1 069	206	843	32	437	n.a.	5	n.a.
1999										
March quarter(f)	n.a.	123	1 099	206	926	36	467	n.a.	7	n.a.
January	n.a.	122	1 085	209	878	39	446	n.a.	4	n.a.
February	n.a.	127	1 101	210	931	35	479	n.a.	10	n.a.
March	n.a.	120	1 110	200	968	34	476	n.a.	8	n.a.

- (a) Some rates in this table have not been published—see Explanatory Notes, paragraph 22.
- (b) Persons in custody are asked their Indigenous status during reception into custody—see Explanatory Notes, paragraphs 11-13.
- (c) Numbers of Indigenous persons for NSW, and numbers of Indigenous persons for Vic. in February 1998, are unavailable—see Explanatory Notes, paragraph 10.
- (d) Persons sentenced to full-time custody in the ACT are held in NSW prisons. The figures are a subset of the NSW figures and are NOT included in the totals for Australia—see Explanatory Notes, paragraph 14.
- (e) Refers to unsentenced persons in ACT prison custody—see Explanatory Notes, paragraph 14.
- (f) Figures for the quarter for first day of the month counts are calculated as a simple average—see Explanatory Notes, paragraph 5.

Legal status and sentence type	NSW(c)	Vic.(c)	Qld	SA	WA	Tas.	NT	ACT in NSW(c)(d)	ACT(e)	Aust.(d)
RATES PER 100,000 ADULT INDIGENOUS POPULATION										
Unsentenced										
1998(f)	n.a.	n.a.	169.3	403.0	309.6	52.4	164.1	..	278.6	n.a.
1998										
March quarter(f)	n.a.	n.a.	149.7	421.0	306.7	32.0	146.2	..	n.p.	n.a.
June quarter(f)	n.a.	164.2	177.1	437.0	277.6	79.3	160.8	..	n.p.	n.a.
September quarter(f)	n.a.	136.8	179.3	375.7	302.9	56.7	186.3	..	n.p.	n.a.
December quarter(f)	n.a.	146.8	171.1	378.4	351.3	41.5	162.9	..	n.p.	n.a.
1999										
March quarter(f)	n.a.	196.5	199.0	463.6	431.2	75.5	209.8	..	n.p.	n.a.
January	n.a.	171.6	186.9	487.6	407.0	90.6	204.4	..	n.p.	n.a.
February	n.a.	216.4	200.0	479.6	473.2	56.7	201.3	..	n.p.	n.a.
March	n.a.	201.5	209.9	423.7	413.3	79.3	223.6	..	n.p.	n.a.
Sentenced										
Fine default only										
1998(f)	n.a.	n.a.	76.2	108.9	61.9	2.8	43.1	n.a.	..	n.a.
1998										
March quarter(f)	n.a.	n.a.	80.0	121.1	40.5	—	40.2	n.a.	..	n.a.
June quarter(f)	n.a.	n.a.	69.4	109.2	51.5	7.6	45.8	n.a.	..	n.a.
September quarter(f)	n.a.	5.0	53.0	101.3	74.7	—	39.4	n.a.	..	n.a.
December quarter(f)	n.a.	5.0	102.2	103.9	81.0	3.8	46.9	n.a.	..	n.a.
1999										
March quarter(f)	n.a.	—	86.4	101.3	137.8	—	61.8	n.a.	..	n.a.
January	n.a.	—	85.3	111.9	135.7	—	38.3	n.a.	..	n.a.
February	n.a.	—	86.9	87.9	126.2	—	83.1	n.a.	..	n.a.
March	n.a.	—	86.9	103.9	151.4	—	63.9	n.a.	..	n.a.
Other sentenced										
1998(f)	n.a.	n.a.	1 524.2	1 207.2	2 131.0	290.9	1 210.6	n.a.	..	n.a.
1998										
March quarter(f)	n.a.	n.a.	1 596.9	1 194.3	2 141.6	276.0	1 289.0	n.a.	..	n.a.
June quarter(f)	n.a.	n.a.	1 528.8	1 279.0	2 035.0	253.0	1 151.1	n.a.	..	n.a.
September quarter(f)	n.a.	815.9	1 492.1	1 188.4	2 120.1	317.2	1 216.0	n.a.	..	n.a.
December quarter(f)	n.a.	783.6	1 479.0	1 167.1	2 227.4	317.2	1 186.2	n.a.	..	n.a.
1999										
March quarter(f)	n.a.	721.4	1 516.2	1 084.5	2 351.5	332.4	1 221.4	n.a.	..	n.a.
January	n.a.	738.8	1 506.9	1 071.1	2 227.4	351.2	1 185.2	n.a.	..	n.a.
February	n.a.	731.3	1 518.4	1 111.1	2 337.8	339.9	1 245.8	n.a.	..	n.a.
March	n.a.	694.0	1 523.3	1 071.1	2 489.3	305.9	1 233.1	n.a.	..	n.a.

(a) Some rates in this table have not been published—see Explanatory Notes, paragraph 22.

(b) Persons in custody are asked their Indigenous status during reception into custody—see Explanatory Notes, paragraphs 11-13.

(c) Numbers of Indigenous persons for NSW, and numbers of Indigenous persons for Vic. in February 1998, are unavailable—see Explanatory Notes, paragraph 10.

(d) Persons sentenced to full-time custody in the ACT are held in NSW prisons. The figures are a subset of the NSW figures and are NOT included in the totals for Australia—see Explanatory Notes, paragraph 14.

(e) Refers to unsentenced persons in ACT prison custody—see Explanatory Notes, paragraph 14.

(f) Figures for the quarter for first day of the month counts are calculated on a simple average—see Explanatory Notes, paragraph 5.

Legal status and sentence type	NSW(c)	Vic.(c)	Qld	SA	WA	Tas.	NT	ACT in NSW(c)(d)	ACT(e)	Aust.(d)
RATES PER 100,000 ADULT INDIGENOUS POPULATION										
Total sentenced 1998(f)	n.a.	n.a.	1 600.4	1 316.1	2 193.0	293.7	1 253.6	n.a.	..	n.a.
1998										
March quarter(f)	n.a.	n.a.	1 676.9	1 315.4	2 182.1	276.0	1 329.1	n.a.	..	n.a.
June quarter(f)	n.a.	781.1	1 598.2	1 388.2	2 086.5	260.6	1 196.9	n.a.	..	n.a.
September quarter(f)	n.a.	820.9	1 545.2	1 289.6	2 194.8	317.2	1 255.4	n.a.	..	n.a.
December quarter(f)	n.a.	788.6	1 581.2	1 271.0	2 308.4	321.0	1 233.1	n.a.	..	n.a.
1999										
March quarter(f)	n.a.	721.4	1 602.6	1 185.7	2 489.3	332.4	1 283.1	n.a.	..	n.a.
January	n.a.	738.8	1 592.2	1 183.1	2 363.1	351.2	1 223.5	n.a.	..	n.a.
February	n.a.	731.3	1 605.3	1 199.0	2 464.0	339.9	1 328.9	n.a.	..	n.a.
March	n.a.	694.0	1 610.2	1 175.1	2 640.7	305.9	1 297.0	n.a.	..	n.a.
Total 1998(f)	n.a.	n.a.	1 769.7	1 719.1	2 502.6	346.1	1 417.7	n.a.	278.6	n.a.
1998										
March quarter(f)	n.a.	n.a.	1 826.6	1 736.4	2 488.9	308.0	1 475.3	n.a.	n.p.	n.a.
June quarter(f)	n.a.	945.3	1 775.3	1 825.2	2 364.1	339.9	1 357.7	n.a.	n.p.	n.a.
September quarter(f)	n.a.	957.7	1 724.4	1 665.3	2 497.7	373.9	1 441.8	n.a.	n.p.	n.a.
December quarter(f)	n.a.	935.3	1 752.3	1 649.3	2 659.6	362.6	1 396.0	n.a.	n.p.	n.a.
1999										
March quarter(f)	n.a.	917.9	1 801.5	1 649.3	2 920.5	407.9	1 491.3	n.a.	n.p.	n.a.
January	n.a.	910.4	1 779.1	1 670.7	2 770.1	441.9	1 423.3	n.a.	n.p.	n.a.
February	n.a.	947.8	1 805.3	1 678.7	2 937.3	396.6	1 530.2	n.a.	n.p.	n.a.
March	n.a.	895.5	1 820.1	1 598.7	3 054.0	385.2	1 520.6	n.a.	n.p.	n.a.

(a) Some rates in this table have not been published—see Explanatory Notes, paragraph 22.

(b) Persons in custody are asked their Indigenous status during reception into custody—see Explanatory Notes, paragraphs 11-13.

(c) Numbers of Indigenous persons for NSW, and numbers of Indigenous persons for Vic. in February 1998, are unavailable—see Explanatory Notes, paragraph 10.

(d) Persons sentenced to full-time custody in the ACT are held in NSW prisons. The figures are a subset of the NSW figures and are NOT included in the totals for Australia—see Explanatory Notes, paragraph 14.

(e) Refers to unsentenced persons in ACT prison custody—see Explanatory Notes, paragraph 14.

(f) Figures for the quarter for first day of the month counts are calculated on a simple average—see Explanatory Notes, paragraph 5.

7

PERSONS IN PERIODIC DETENTION(a)

Sex	NSW	ACT	Aust.
AVERAGE DAILY NUMBER			
Males			
1998	1 333	70	1 403
1998			
March quarter	1 381	73	1 454
June quarter	1 338	72	1 410
September quarter	1 300	70	1 370
December quarter	1 315	63	1 378
1999			
March quarter	1 296	58	1 354
January	1 326	59	1 385
February	1 293	56	1 349
March	1 269	59	1 328
Females			
1998	123	5	129
1998			
March quarter	128	4	132
June quarter	124	5	130
September quarter	117	6	123
December quarter	126	5	131
1999			
March quarter	119	3	122
January	130	3	133
February	119	3	122
March	107	3	110
Persons			
1998	1 457	75	1 531
1998			
March quarter	1 509	77	1 586
June quarter	1 463	77	1 540
September quarter	1 415	76	1 491
December quarter	1 441	68	1 510
1999			
March quarter	1 415	61	1 475
January	1 456	62	1 518
February	1 412	59	1 471
March	1 376	62	1 438

(a) See Glossary for definition of Periodic detention. In 1998 and 1999 this was a type of custody used only in NSW and the ACT.

7

PERSONS IN PERIODIC DETENTION(a) *continued*

Sex	NSW	ACT	Aust.
RATE PER 100,000 ADULT POPULATION			
Males			
1998	57.3	60.5	20.2
1998			
March quarter	59.6	63.5	21.1
June quarter	57.6	62.6	20.4
September quarter	55.7	61.3	19.7
December quarter	56.2	54.6	19.8
1999			
March quarter	55.1	49.9	19.3
January	56.4	51.0	19.8
February	55.0	48.0	19.3
March	54.0	50.6	19.0
Females			
1998	5.1	4.5	1.8
1998			
March quarter	5.3	3.7	1.9
June quarter	5.2	4.6	1.8
September quarter	4.8	5.1	1.7
December quarter	5.3	4.6	1.8
1999			
March quarter	4.9	2.5	1.7
January	5.3	2.5	1.8
February	4.9	2.5	1.7
March	4.4	2.5	1.5
Persons			
1998	30.7	32.0	10.9
1998			
March quarter	32.0	33.1	11.3
June quarter	30.9	33.1	11.0
September quarter	29.8	32.8	10.6
December quarter	30.3	29.2	10.7
1999			
March quarter	29.6	25.9	10.4
January	30.5	26.5	10.7
February	29.5	25.0	10.3
March	28.8	26.3	10.1

(a) See Glossary for definition of Periodic detention. In 1998 and 1999 this was a type of custody used only in NSW and the ACT.

	NUMBER ON FIRST DAY OF MONTH.....								
	NSW	Vic.	Qld	SA	WA	Tas.	NT	ACT	Aust.
MALES									
1998(b)	240	59	80	24	70	3	14	3	493
1998									
March quarter(b)	235	55	69	23	56	3	12	4	456
June quarter(b)	236	51	79	22	63	4	18	3	477
September quarter(b)	243	64	85	23	74	4	14	3	510
December quarter(b)	244	66	89	25	89	1	12	4	530
1999									
March quarter(b)	244	65	92	28	90	—	13	4	528
January	246	62	88	27	93	—	12	4	529
February	239	64	89	24	93	—	11	4	527
March	247	68	99	33	83	1	16	3	528
FEMALES									
1998(b)	24	5	10	4	8	1	1	1	54
1998									
March quarter(b)	22	5	10	2	9	1	—	1	50
June quarter(b)	21	5	10	4	8	1	—	1	49
September quarter(b)	27	5	9	5	7	1	2	1	56
December quarter(b)	25	7	11	4	10	1	3	1	61
1999									
March quarter(b)	33	4	12	3	10	—	2	1	62
January	35	5	12	2	11	—	2	1	62
February	34	4	9	4	10	—	2	1	62
March	29	4	15	4	10	—	3	1	62
PERSONS									
1998(b)	263	64	90	27	79	4	15	4	547
1998									
March quarter(b)	258	59	79	25	64	4	12	5	506
June quarter(b)	257	56	89	27	71	5	18	4	526
September quarter(b)	271	69	93	28	81	5	16	4	566
December quarter(b)	269	73	99	30	99	2	15	5	591
1999									
March quarter(b)	277	69	104	31	100	—	15	5	590
January	281	67	100	29	104	—	14	5	591
February	273	68	98	28	103	—	13	5	589
March	276	72	114	37	93	1	19	4	590

(a) See Glossary for definition of Federal sentenced prisoner. 'ACT in NSW' in other tables refers to prisoners held in NSW and sentenced in the ACT. This table shows prisoners by the State or Territory in which they were sentenced, not where they were held in custody, so 'ACT in NSW' is not shown here.

(b) Figures for the year, quarter for first day of the month counts are calculated as a simple average—see Explanatory Notes, paragraph 5.

EXPLANATORY NOTES

INTRODUCTION

1 This publication presents monthly and quarterly statistical series on persons held in adult corrective services custody in Australia. It contains data on the number of persons in corrective services custody by their legal status and sentence type, the number of sentenced persons received into corrective services custody each month, the number of Indigenous persons in corrective services custody by their legal status and sentence type, and the number of federal prisoners each month.

2 Statistics presented in this publication are compiled in three ways:

- Average daily prisoner population: Counts taken on each day of the month are summed and divided by the number of days in that month to determine the average daily prisoner population for that month. The average daily periodic detainee population is a count of persons on periodic detention on each day a centre is open, divided by the number of days a centre is open.
- Sentenced prisoner reception figures: Counts are taken of the number of receptions where a prisoner is received as a sentenced prisoner plus the number of changes of legal status from unsentenced to sentenced.
- First day of the month prisoner population: Counts of prisoner populations, taken on or near the first day of the month (see Explanatory Notes, paragraph 4).

3 Statistics in this publication are derived from administrative systems maintained by State and Territory corrective services agencies. Although national standards and classifications are used in the compilation of these statistics, some discrepancies remain between the States and Territories. These are due to legislative and procedural differences between jurisdictions. As part of its development strategy, the ABS is working with corrective services agencies to minimise the effect of these differences.

REFERENCE PERIOD/DATE

4 For the average daily prisoner population and the sentenced prisoner receptions counts, the reference period is the complete reference month. For all other information in the publication, the reference date is the first day of the month. However, not all States and Territories report strictly according to this 'first day of the month' rule:

- The Western Australian and Victorian prison population and Australian Capital Territory prisoners in New South Wales prisons are counted as at midnight on the last day of the month. In these cases the figures provided are taken to represent the prison population at the beginning of the following month to align with practices in other States and Territories.
- The New South Wales prison population is counted on the first Sunday of the month.
- In January 1999 ACT Corrections commenced sending surplus unsentenced prisoners to New South Wales prisons. For the March quarter 1999, table 3 shows these unsentenced ACT in NSW prisoners on a daily average basis.

5 Calculation of figures for the entire quarter and entire year varies depending on the counting unit and method of counting prisoners:

- Average daily figures: Figures are calculated by weighting the average according to the number of days in each month or year.
- First day of the month: Figures are simple averages. In calculation of quarterly figures, the figures for each month are added and the total is divided by three; for yearly figures, the figures for each month are added and the total divided by twelve.
- Sentenced receptions: Figures are totals of each month.

SCOPE

6 The scope of the statistics in this publication includes all persons remanded or sentenced to adult custodial corrective services agencies in each State and Territory in Australia.

7 In all States and Territories except New South Wales, South Australia and Western Australia, persons remanded or sentenced to adult custody are aged 17 years and over. Persons under 17 years are treated as juveniles in most Australian courts and are not remanded or sentenced to custody in adult prisons, other than in exceptional circumstances. However, in New South Wales, South Australia and Western Australia 'adult' refers to persons aged 18 years and over.

8 The statistics include persons in Work Outreach Camps and Community Custody Centres in Queensland. In table 1 these persons have been counted on a first day of the month basis from April to December 1997. However the figures in the rest of the table, and the rest of persons in corrective services custody in Queensland, were counted on a daily average basis.

DATA SOURCE

9 Statistics in this publication are derived from information collected by the ABS from administrative records held by corrective services agencies within each State and Territory. Statistics on federal prisoners are derived from records kept by the Criminal Law Division of the Commonwealth Attorney-General's Department.

10 Statistics marked 'n.a.' in tables 3, 5 and 6 are not available for inclusion in this publication. New South Wales Department of Corrective Services recently purchased a new computer system, and have undertaken programming work to enable provision of counts of Indigenous persons in custody at some stage in the future. Australian Capital Territory Corrective Services recently discovered that numbers of prisoners sentenced in Australian Capital Territory courts and held in New South Wales prisons had been underreported. Staff from this agency will investigate Indigenous prisoner numbers with a view to resolving this underreporting in the September quarter 1999 issue. The Victorian computer system was modified to produce counts of Indigenous persons from the first day of March 1998.

INDIGENOUS IDENTIFICATION

11 In all States and Territories persons are asked whether they are Aboriginal or Torres Strait Islanders during entry into custody. It is uncommon for corrective services agencies to collect Indigenous status information from sources other than the person's own identification.

12 Some persons in custody are recorded as of unknown Indigenous status on corrective services agencies' information systems, but unknown Indigenous status has not been provided for this collection. It is intended that unknown Indigenous status will be collected from these systems in future.

13 Table 5 shows the ratio of Indigenous to non-Indigenous rates of imprisonment. To derive these figures the rates per 100,000 adult non-Indigenous population were calculated as if all those persons not identified as Indigenous are non-Indigenous.

AUSTRALIAN CAPITAL TERRITORY PRISONERS

14 The Australian Capital Territory has a detention centre for unsentenced prisoners and a periodic detention centre, but does not have a facility to hold persons sentenced to full-time custody. Persons sentenced to full-time custody in Australian Capital Territory criminal courts are held in New South Wales prisons. To provide greater understanding of the number of prisoners attributed to the Australian Capital Territory while presenting an accurate picture of the New South Wales prisoner population, statistics relating to Australian Capital Territory prisoners in New South Wales prisons are presented as a subset of the New South Wales figures.

RATES AND RATIOS

15 Imprisonment rates enable comparison of prisoner numbers across States and Territories. Prisoner rates are expressed per 100,000 adult population, which is in accord with international and State and Territory practice.

16 For the purpose of this publication the population figures used in the calculation of rates are for persons aged 17 years and over for all States and Territories except New South Wales, South Australia and Western Australia where the population used is persons aged 18 and over (see Explanatory Notes, paragraph 7).

17 Rates for the Indigenous adult population in this publication are based on revised projections for 30 June 1998 (refer *Experimental Projections of the Aboriginal and Torres Strait Islander Population 30 June 1996 to 30 June 2006* (Cat. no. 3231.0)). These projections are in turn based on the results of the 1996 Census of Population and Housing.

18 Two series of these projections have been published. The so-called 'higher series' takes into account a possible change in propensity for people to identify themselves as Indigenous since the last Population Census and estimates this from the last inter-censal period. The lower series assumes no such change has taken place since 1996. The lower of the two series was used in calculating rates for the Indigenous adult population in this publication. This is because, in discussions with representatives of Corrective Services agencies, it was felt that the propensity to identify as Indigenous has not increased to the same extent in the prison environment as might have occurred in the wider community.

19 Rates for the total adult prisoner population are calculated using the Estimated Resident Population (ERP) for each of the States and Territories (refer *Population by Age and Sex, Australian States and Territories* (Cat. no. 3201.0)). As the population changes over time the denominator used for the calculation of rates will vary, depending on the reference period. The following shows the reference periods and the related ERP data for this issue:

<i>Reference period</i>	<i>ERP data</i>
January to March 1997	March quarter 1997
April to June 1997	June quarter 1997
July 1997 to March 1998	September quarter 1997
April to June 1998	December quarter 1997
July to September 1998	March quarter 1998
October to December 1998	June quarter 1998
January to March 1999	March quarter 1999

EXPLANATORY NOTES *continued*

RATES AND RATIOS *continued*

20 The ratio of imprisonment rates of Indigenous persons to non-Indigenous persons is calculated by dividing the Indigenous imprisonment rate for each period and State or Territory by the corresponding non-Indigenous imprisonment rate.

21 The ratio indicates the extent to which the imprisonment rates of Indigenous persons exceed the imprisonment rates of non-Indigenous persons. A ratio of 20:1 indicates that, for the given State or Territory, the imprisonment rate of Indigenous persons per 100,000 adult population is 20 times that of the imprisonment rate of non-Indigenous persons.

22 In some instances Indigenous rates and ratios have not been published. Where this occurs, the cell concerned contains the symbol 'n.p.' This happens where, firstly, the number of persons in custody is less than 10, and secondly, where the population on which the rate is calculated is less than 5,000. This has been done because such rates and ratios vary widely from month to month with small variations in numbers of persons. They therefore give an inaccurate reflection of the relative involvement of Indigenous persons in custody.

RELATED PUBLICATIONS

ABS publications

23 Other ABS publications which may be of interest include:

Australian Standard Offence Classification, 1997 (ASOC) (Cat. no. 1234.0)—irregular

Crime and Safety, Australia, April 1998 (Cat. no. 4509.0)—irregular

Higher Criminal Courts, Australia, 1996-1997 (Cat. no. 4513.0)—annual

Prisoners in Australia, 1998 (Cat. No. pending)—annual

Recorded Crime, Australia, 1998, (Cat. no. 4510.0)—annual

24 Current publications produced by the ABS are listed in the Catalogue of *Publications and Products* (Cat. no. 1101.0). The ABS also issues, on Tuesdays and Fridays, a *Release Advice* (Cat. no. 1105.0) which lists publications to be released in the next few days. The Catalogue and Release Advice are available from any ABS office, and at our website: <http://www.abs.gov.au>.

Non-ABS publications

25 Non-ABS sources which may be of interest include:

Australian Institute of Criminology, *Deaths in Custody, List of Publications* (<http://www.aic.gov.au>)

Crime Research Centre, University of Western Australia, *Crime and Justice Statistics for Western Australia, 1997*

NSW Bureau of Crime Statistics and Research, *Key Trends in Crime and Justice New South Wales, 1997*

Queensland Government Statistician's Office, *Crime and Justice Statistics Queensland, 1997*

UK Home Office Research, Development and Statistics Directorate, *World Prison Population List* (<http://www.homeoffice.gov.uk/rds/areas/prispsf.htm>)

GLOSSARY

Corrective services custody	Confinement in a place intended primarily for the purpose of confining prisoners, such as a prison, prison farm, Periodic Detention Centre or Community Custody Centre.
Federal sentenced prisoner	Persons charged and sentenced under a Commonwealth statute. For the purposes of this publication federal sentenced prisoners are those persons who are recognised by the Criminal Law Division of the Commonwealth Attorney-General's Department as having been charged and sentenced under a Commonwealth statute. Federal sentenced prisoners are counted by the State or Territory in which they were sentenced, not where they were held in custody.
Fine default only	A sentence type indicating that, at the time, the prisoner is serving a sentence for default of a fine and nothing else.
Indigenous prisoner	A prisoner who identifies as either Aboriginal or Torres Strait Islander.
Legal status	The legal status of an offender reflects the warrant(s) or court order(s) which provide the legal basis for the detention in custody of the offender.
Open custody	A custodial regime for managing prisoners which does not require them to be confined by a secure perimeter physical barrier, irrespective of whether a physical barrier exists.
Other sentenced	A sentence type indicating that, at the time, a person is serving a sentence other than, or in addition to, a fine default sentence.
Periodic detention	A type of custody or order where a sentenced prisoner is required to be held in custody for two consecutive days in a one-week period.
Full-time custody	A type of custody where a prisoner is required to be held in custody on a full-time basis.
Prisoner	A person held in custody. For the purposes of this collection, prisoners are those whose confinement is the responsibility of a corrective services agency.
Secure custody	A custodial regime for managing prisoners that requires them to be confined by a secure physical barrier.
Sentenced	A legal status indicating that a person has received a custodial order from a court in response to a conviction for a criminal offence.
Sentenced prisoner reception	<p>Includes persons who enter corrective services custody from the community, having received a sentence of imprisonment as an outcome of a court proceeding. It also includes persons who are sentenced to custody while in custody on remand (i.e. change status from a remand to a sentenced prisoner). Sentenced prisoners in custody who receive a further sentence of imprisonment are not counted as sentenced receptions.</p> <p>Two types of sentenced prisoner reception are distinguished:</p> <ul style="list-style-type: none">▪ A <i>fine default only</i> reception is a sentenced reception where a person enters custody as a result of defaulting on the payment of a fine.▪ An <i>other sentenced reception</i> is a sentenced reception (including changes of status from unsentenced to sentenced) for anything other than a fine default only reception. <p>Note that Victorian reception figures do not include prisoners who change status from unsentenced to sentenced in the period.</p>
Unsentenced	A legal status indicating that a person is confined to custody while awaiting the outcome of their trial. Some sentenced prisoners are also remanded in custody, i.e. are unsentenced, in relation to other offences pending a court hearing. In such cases, these prisoners are counted as sentenced.

SELF-HELP ACCESS TO STATISTICS

- CPI INFOLINE* For current and historical Consumer Price Index data, call 1902 981 074 (call cost 75c per minute).
- DIAL-A-STATISTIC* For the latest figures for National Accounts, Balance of Payments, Labour Force, Average Weekly Earnings, Estimated Resident Population and the Consumer Price Index call 1900 986 400 (call cost 75c per minute).
- INTERNET* www.abs.gov.au
- LIBRARY* A range of ABS publications is available from public and tertiary libraries Australia-wide. Contact your nearest library to determine whether it has the ABS statistics you require.

WHY NOT SUBSCRIBE?

- PHONE* +61 1300 366 323
- FAX* +61 03 9615 7848

CONSULTANCY SERVICES

ABS offers consultancy services on a user pays basis to help you access published and unpublished data. Data that is already published and can be provided within 5 minutes is free of charge. Statistical methodological services are also available. Please contact:

<i>INQUIRIES</i>	<i>City</i>	<i>By phone</i>	<i>By fax</i>
	Canberra	02 6252 6627	02 6207 0282
	Sydney	02 9268 4611	02 9268 4668
	Melbourne	03 9615 7755	03 9615 7798
	Brisbane	07 3222 6351	07 3222 6283
	Perth	08 9360 5140	08 9360 5955
	Adelaide	08 8237 7400	08 8237 7566
	Hobart	03 6222 5800	03 6222 5995
	Darwin	08 8943 2111	08 8981 1218

POST Client Services, ABS, PO Box 10, Belconnen ACT 2616

EMAIL client.services@abs.gov.au



2451200003991
ISSN 1440-5997

RRP \$18.00